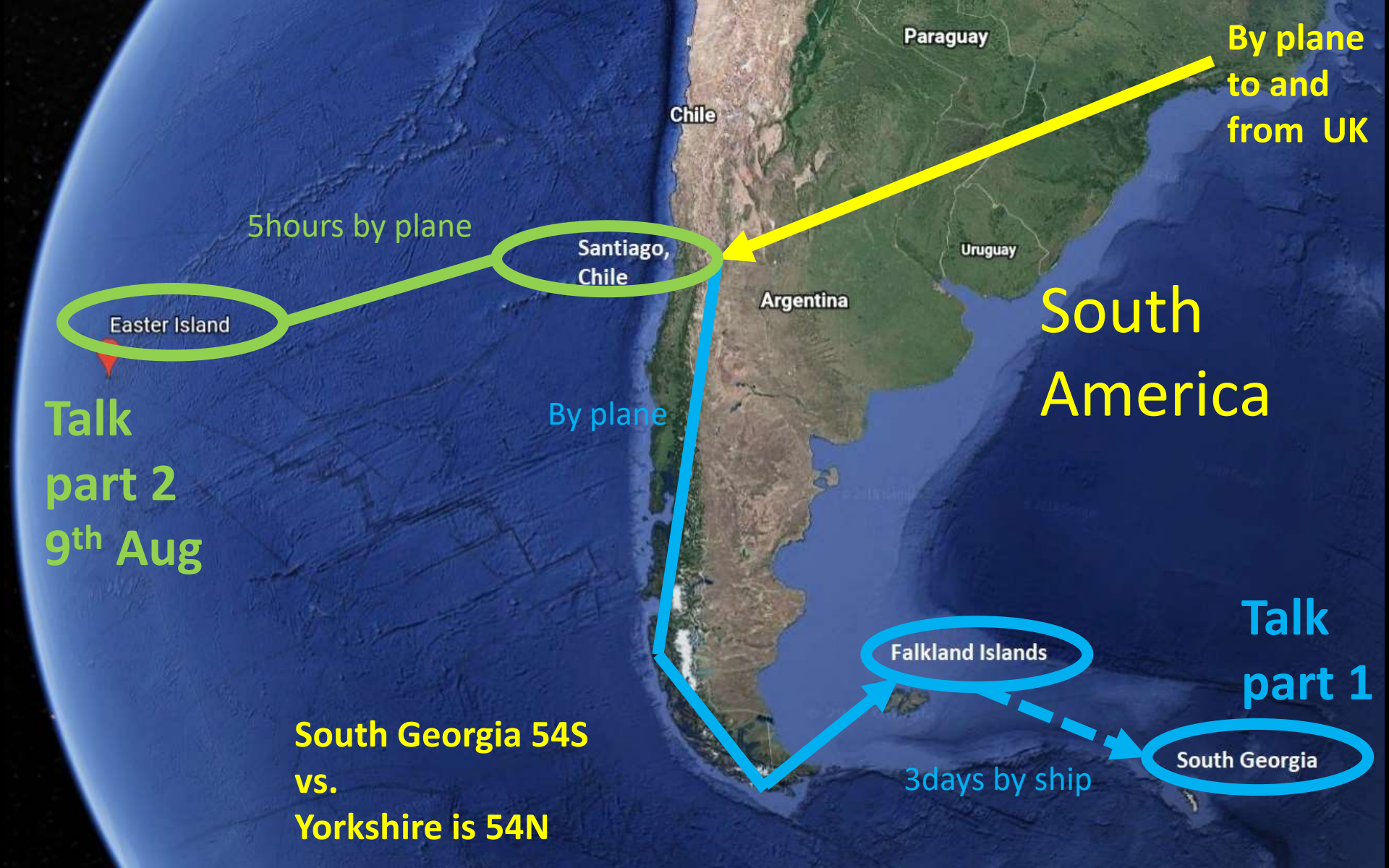


The Falklands & South Georgia

25th Mar – 7th Apr 2018

Steve Ransome and Diane Watling





By plane
to and
from UK

5 hours by plane

Santiago,
Chile

Easter Island

Talk
part 2
9th Aug

By plane

Argentina

Paraguay

Uruguay

South
America

Talk
part 1

Falkland Islands

3 days by ship

South Georgia

South Georgia 54S
vs.
Yorkshire is 54N

Why visit South Georgia?

- ✓ Penguins and other wildlife
- ✓ Geography and geology, glaciers, fjords
- ✓ History – whaling and Ernest Shackleton, 1982 war
- ✓ Friends had been and recommended it
- ✓ Remoteness – we saw no other ships in 2 weeks
- ✗ Long sea crossing over very rough ocean (80knot winds!)
- ✗ Remoteness – we saw no other ships in 2 weeks



Saunders
Island

3 days ship to South Georgia ->

-> Fly from Chile (only 1 flight a week)

Stanley

Falkland
Islands (Islas
Malvinas)

RAF Mount
Pleasant military
airport

The Falkland Islands
population 3400, 4000sq mi



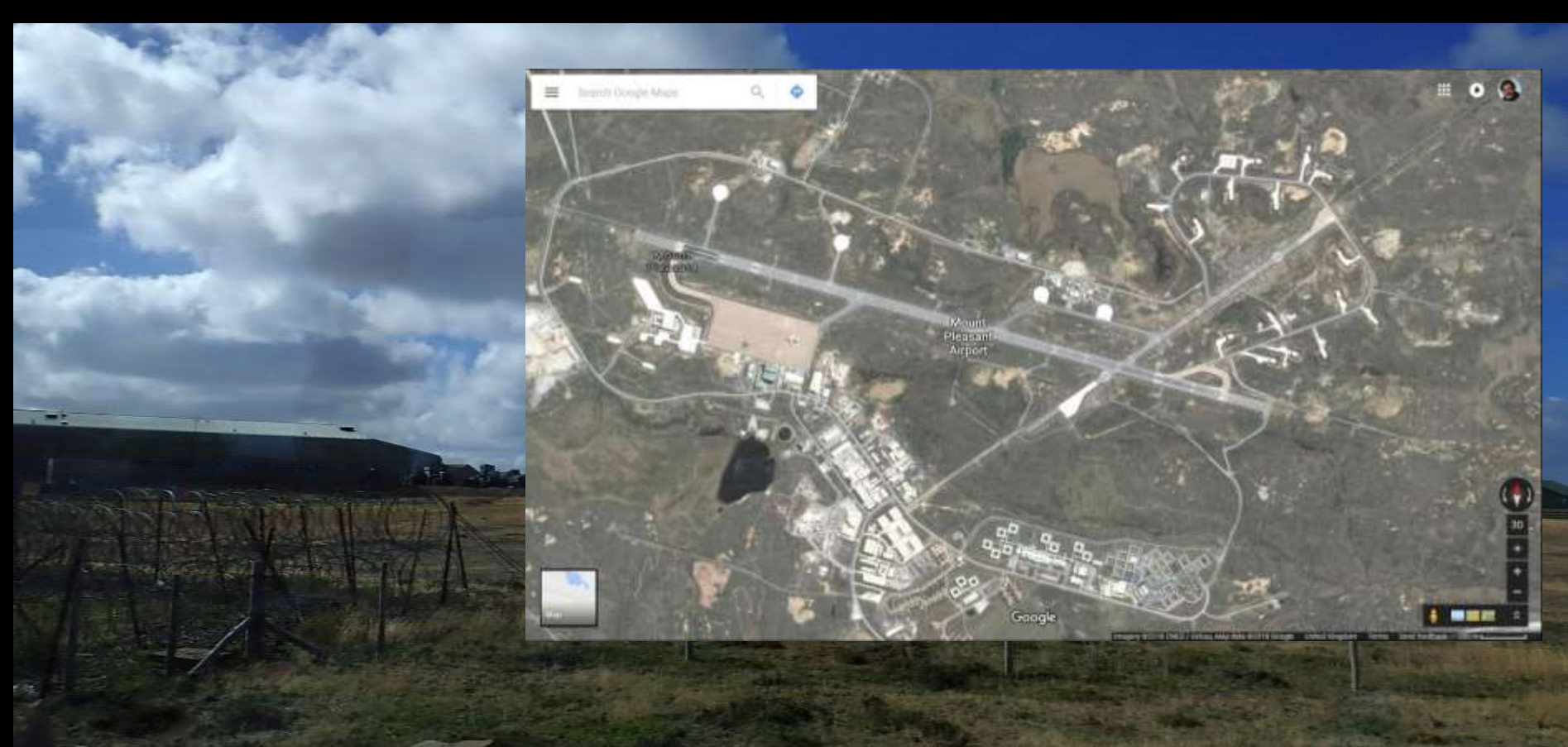
Coming in to land in the Falklands



Motto "Desire the right"



Mount Pleasant military airport
(no photos on the base, no hats, no AA batteries)



Mount Pleasant military airport
(no photos on the base, no hats, no AA batteries)

On the Falklands

Farm



Boot Hill

<https://www.atlasobscura.com/places/boot-hill>





(Port) Stanley houses and post office
Population ~ 2100 mostly British

https://en.wikipedia.org/wiki/Stanley,_Falkland_Islands

Falklands has its own
money and also
accepts old £1 coins





Stanley harbour with Cathedral



Stanley Cathedral

(sometimes people get locked in)

<https://www.falklandislands.com/things-to-do/christ-church-cathedral-p673891>



Stanley museum
an old shop and a
tank





The Polar Pioneer (50 passengers)

Sister ship to the one we had in Svalbard

<https://www.auroraexpeditions.com.au/ship/polar-pioneer>



The bridge was open almost all the time so that we could see the radar and charts and also talk with the crew



First day - Lifeboat drill



First day - Lifeboat drill. Supplies for 3 days

How to get ashore –
Climb down a
gangway and get
in a Zodiac dinghy





“Take only photos, leave only footprints”
This made the wildlife very tame



Eradication of introduced species Reindeer and rats on South Georgia

<https://www.npr.org/sections/thetwo-way/2018/05/10/610057564/massive-eradication-effort-ends-rodents-reign-of-terror-on-forbidding-isle>

MUST READS

Massive Eradication Effort Ends Rodents' Reign Of Terror On Forbidding Isle

May 10, 2018 · 7:32 PM ET

 COLIN DWYER 



Jane Tansell, one of the two handlers responsible for the rodent detection dogs, looks on from the background as a camera captures wildlife on South Georgia Island earlier this year.
Oliver Prince/Courtesy of South Georgia Heritage Trust



Day 1 : Saunders Island “sheep farm” 50mi² –
Population 2 people, thousands of penguins (five species)



**Black browed Albatross colony –
note mounds as nests**

https://en.wikipedia.org/wiki/Black-browed_albatross



Flapping to strengthen wing muscles



Rockhopper Colonies
all the way up the slope
Rotated panoramic photo



Whale skeleton on beach



King cormorant
60,000 pairs 75cm

<http://www.falklands.net/BirdGuideKingCormorant.shtml>



Johnny rook "Striated
caracara" 400pairs 60cm

<http://www.falklands.net/BirdGuideStriatedCaracara.shtml>



Upland geese , 60,000 pairs 75cm

<http://www.falklands.net/BirdGuideUplandGoose.shtml>



Rock hopper penguins 21" 6 lb 320,000 pairs

<http://www.falklandsconservation.com/wildlife/penguins/rockhopper>



This rare macaroni penguin was found living in a rock hopper colony (hybrids possible)



Rock hopper penguins cling to a cliff edge
can't turn round when they have eggs



Moulting Rockhoppers feathers everywhere



Rock hopper penguins hop up rocks to their nests (but often slide down again)



Magellanic penguins, summer visitors, live in burrows <http://www.falklandsconservation.com/wildlife/penguins/magellanic>



South Atlantic sunset...



For the next 3 days and nights we sailed eastwards across the sea to South Georgia ...

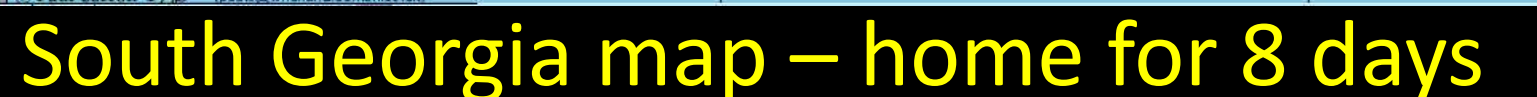


After 3 days we got our first glimpse of
South Georgia peeking through the mist



South Georgian
Coastline
10000ft
mountains and
glaciers to the
sea





South Georgia map – home for 8 days



Entering a Fjord to see the glaciers



Waterfalls
from
glaciers

notice the
zodiac and
people for
scale



Glacier at the end of the fjord.



High pressures
cause glacier
ice to be blue.
Dark lines are
sediment
Vertical cracks
are as glacier
flows down
slope

← Seals like to climb
and play on newly
calved icebergs



Gentoo penguins and
birds go to investigate
as new food sources
will have been stirred
up →





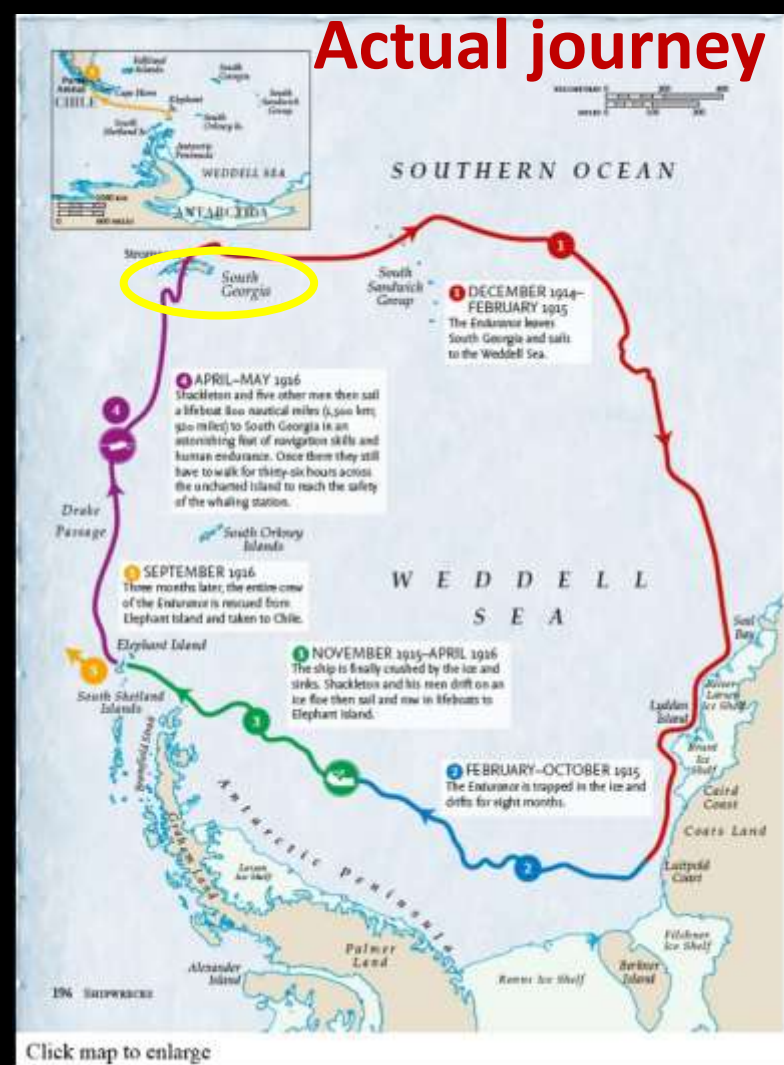
Zodiacs dinghies can get past icebergs

Ernest Shackleton
Polar Explorer
1874-1922
and South Georgia





Planned walk across Antarctica



Imperial Trans-Antarctic Expedition, 1914–17



Grytviken museum



Sextant

Primus
Stove

Replica
Boots

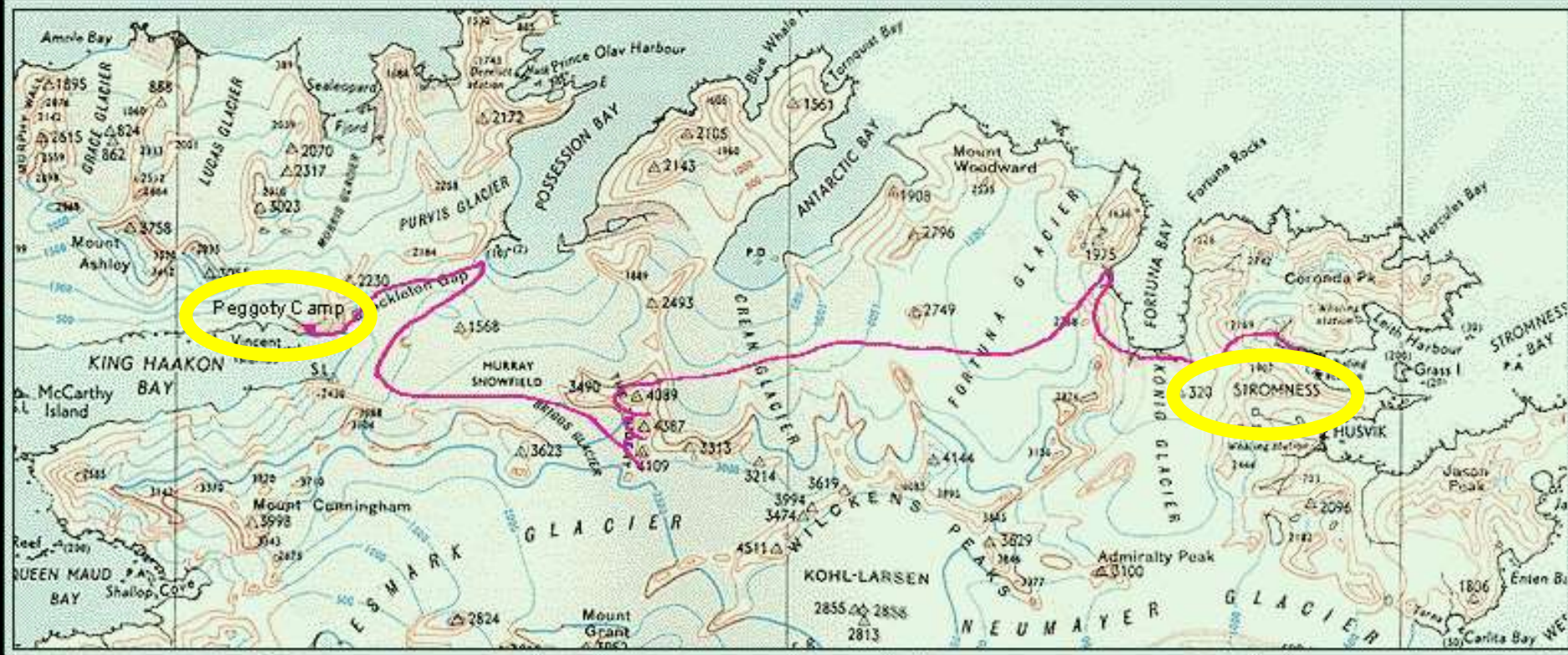
Diving suit

Grytviken Shackleton museum



Replica lifeboat James Caird that made the crossing to South Georgia

Grytviken Shackleton museum SG



Shackleton's rescue trek across uncharted
South Georgia

<http://mappery.com/maps/South-Georgia-Island-Shackleton-Route-1916-Map.gif>

A 3 hour hike across
South Georgia to Grytviken





Human chain to cross wide fast-flowing streams



A climb, much of it through
tussocks





A climb – being watched by a seal



A view from part way up of people who
couldn't make the climb



Near the top –
A rescue hut



Reflections in a calm lake



Lake and sky



Near the peak
– time for photos to prove we'd made it



At the top a cairn used in the war 1982



Trekking back down again to Grytviken



Descending into disused whaling station



Grytviken whaling station
– from the ship instead of the hike



Scott Polar Research Institute <http://www.spri.cam.ac.uk/>



Scott Polar Research Institute <http://www.spri.cam.ac.uk/>

Grytviken historic
whaling photos



Seal pots or Trypots – after killing seals they were boiled for their oil using penguins as fuel

Grytviken post office



- Posted a card to Kesgrave on 2nd April which arrived 11th May!
- I recognised that the man who sold me the postcard had a Suffolk accent. He came from Lowestoft!



Grytviken Norwegian church



Our ship moored at Grytviken



Rusty whaling ship with harpoon on its bow



Grytviken Shackleton's grave



Grytviken A toast to Shackleton “the boss”



Stromness – where Shackleton found rescuers



Stromness – unsafe buildings missing roofs



Around South Georgia



Whalers' unofficial post office 1982



Wildlife



Rare nesting wandering albatross



South Georgia
Caracara?



South Georgia
Cormorant



South Georgia pipit
almost exterminated
by the rats



Antarctic Skua
steals penguin eggs



Fur Seals

We mostly saw pups as it was late in the season Apr = Oct



Fur Seals playing on the beach



Fur Seals think they own the board walk



Fur Seal basking in the sun



Fur Seals chase an underwater camera



Fur Seals hiding in the grass



Elephant Seals like to huddle together



Elephant Seals where Shackleton sheltered



Elephant seal Beach Master + harem (back)
Mother fur seal (front)



Seals play fighting



Elephant Seals like to bask in the sun



Gentoo penguins 32" 13lb calling



Gentoo beach – two are fighting in the stream



Welcome committee of penguins and seals



King penguin 38" 26lb 18month breeding cycle!



60,000 King penguin colony panorama



King penguins incubating eggs on their feet



King penguin creche ~1yr



Feeding



King penguin Creche >



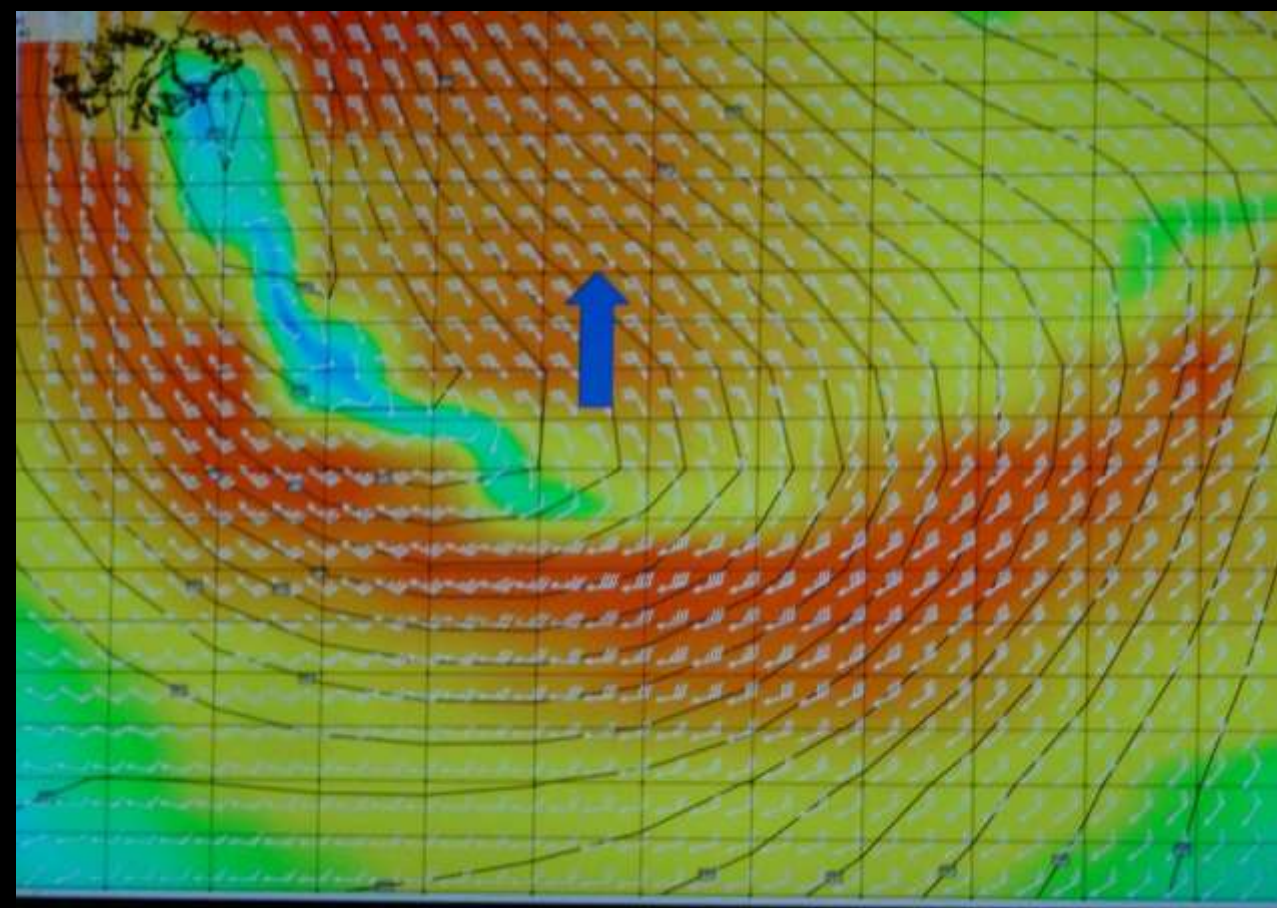
King penguins walking to sea >



Birds fly over King Penguins looking for eggs



Some fur seals do behave badly



Storm force winds were forecast for the journey back to the Falklands - red are > 50 knot



The Journey back got rough



The Journey back got rough



Coming up in part 2 (9th Aug):
Santiago, Chile & Easter Island



**In memory of my Dad Jack who used to write the year
in the sand on holiday and then take a photo**



Thank you for
your attention

... Any questions?



- Snowy sheathbill

https://en.wikipedia.org/wiki/Snowy_sheathbill